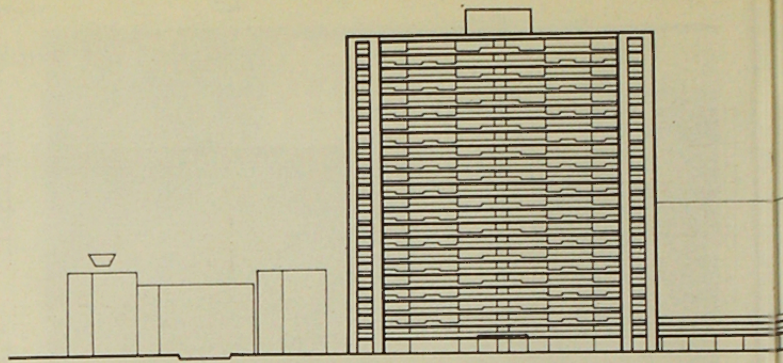


ALCALDIA DE SANTIAGO
DIVISION DE ADMINISTRACION URBANA
1964

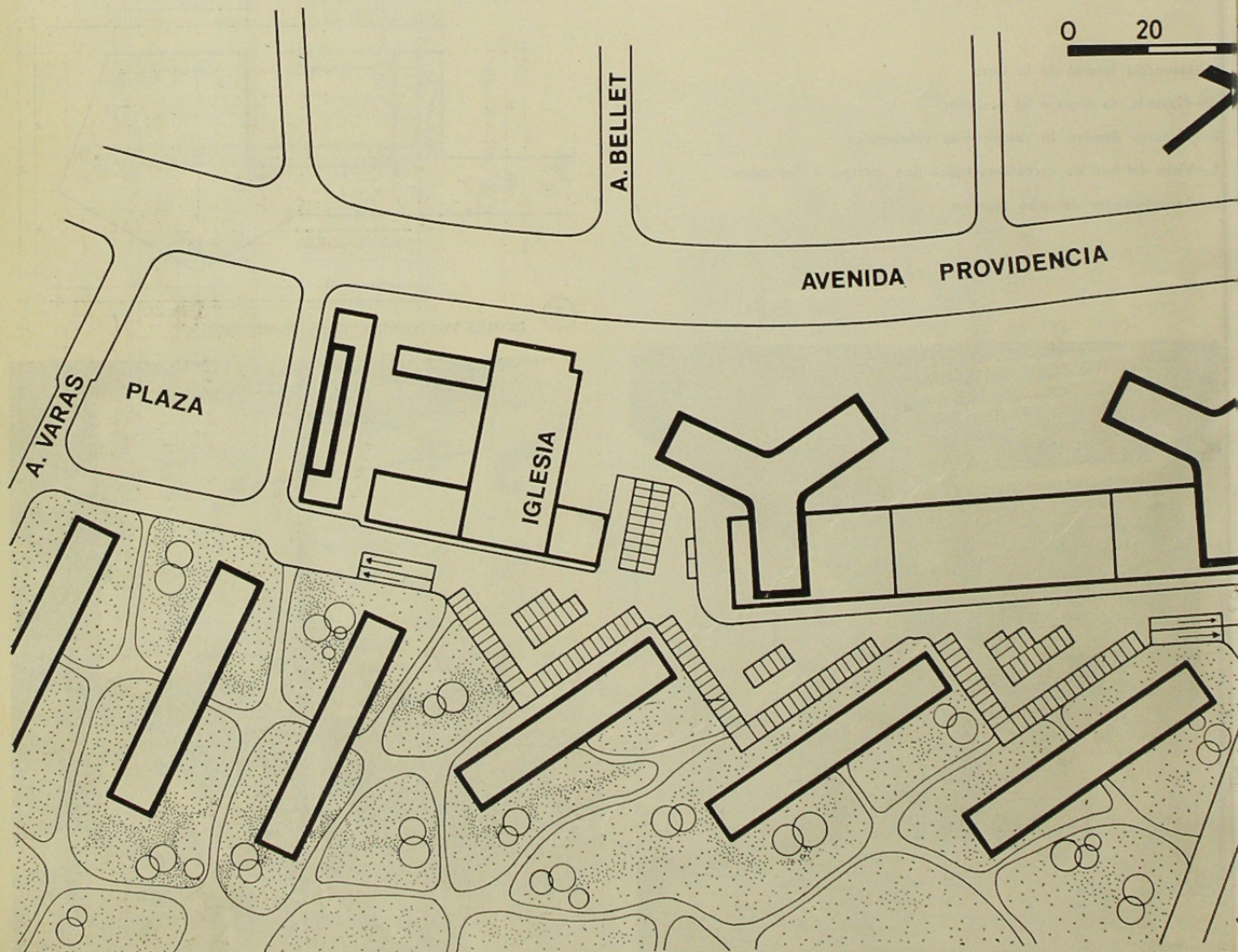


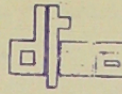
UNIDAD VECINAL PROVIDENCIA

ARQUITECTOS: CARLOS BARELLA I., ISAAC ESKENAZI T.

EMPRESA CONSTRUCTORA: NEUT LATOUR.

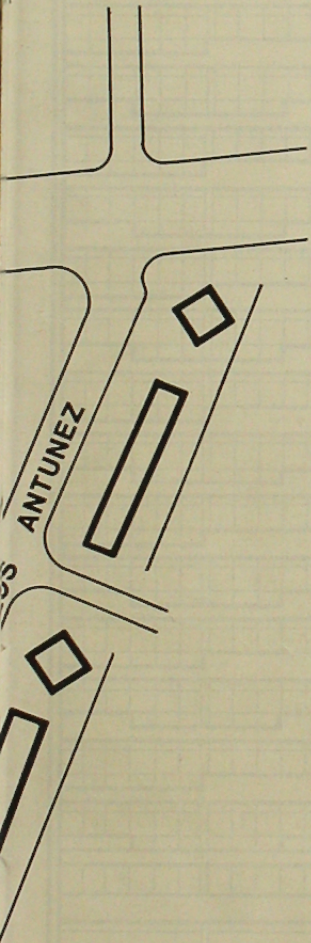
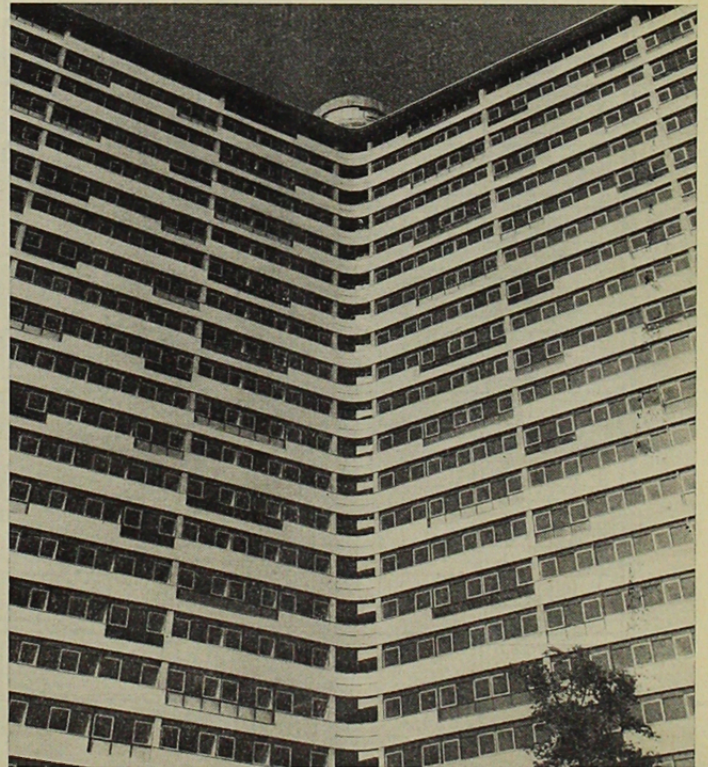
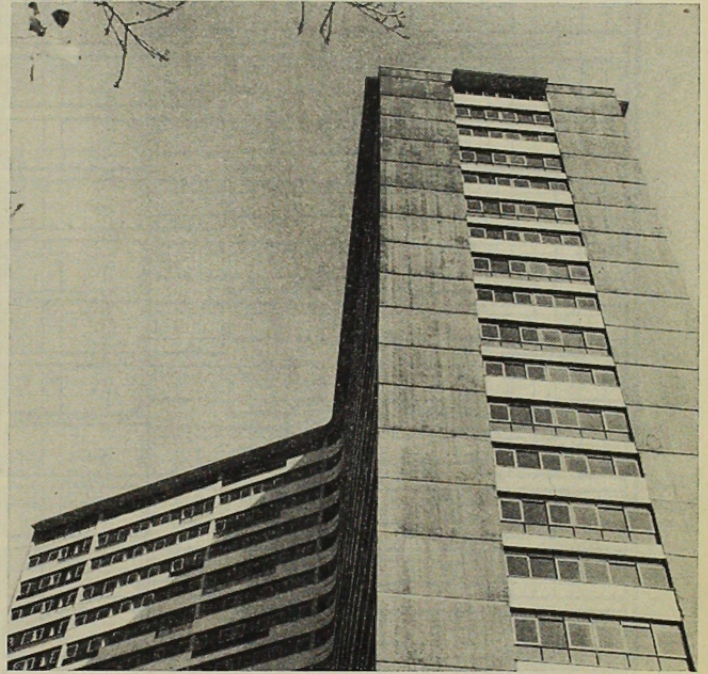
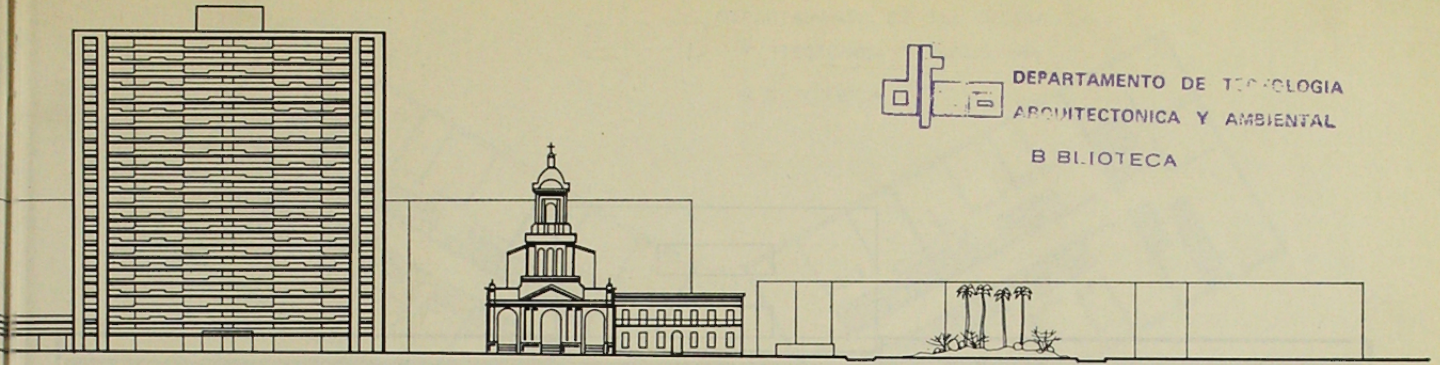
INGENIERO ESTR.: RODRIGO FLORES A.



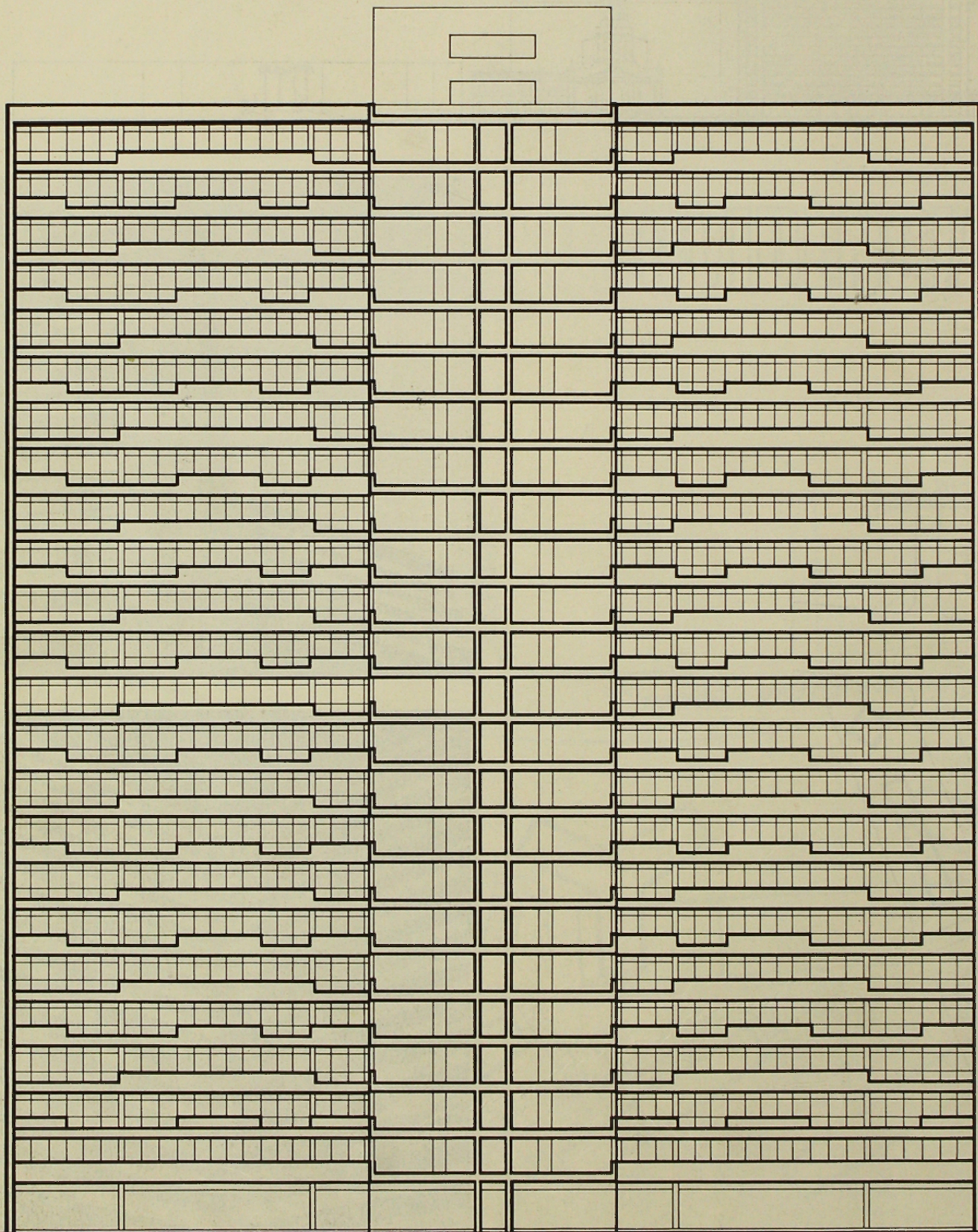


DEPARTAMENTO DE TECNOLOGIA
ARQUITECTONICA Y AMBIENTAL

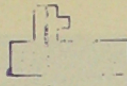
BIBLIOTECA



UNIVERSIDAD DE CHILE
FACULTAD DE ARQUITECTURA
DISEÑO DE EDIFICIOS



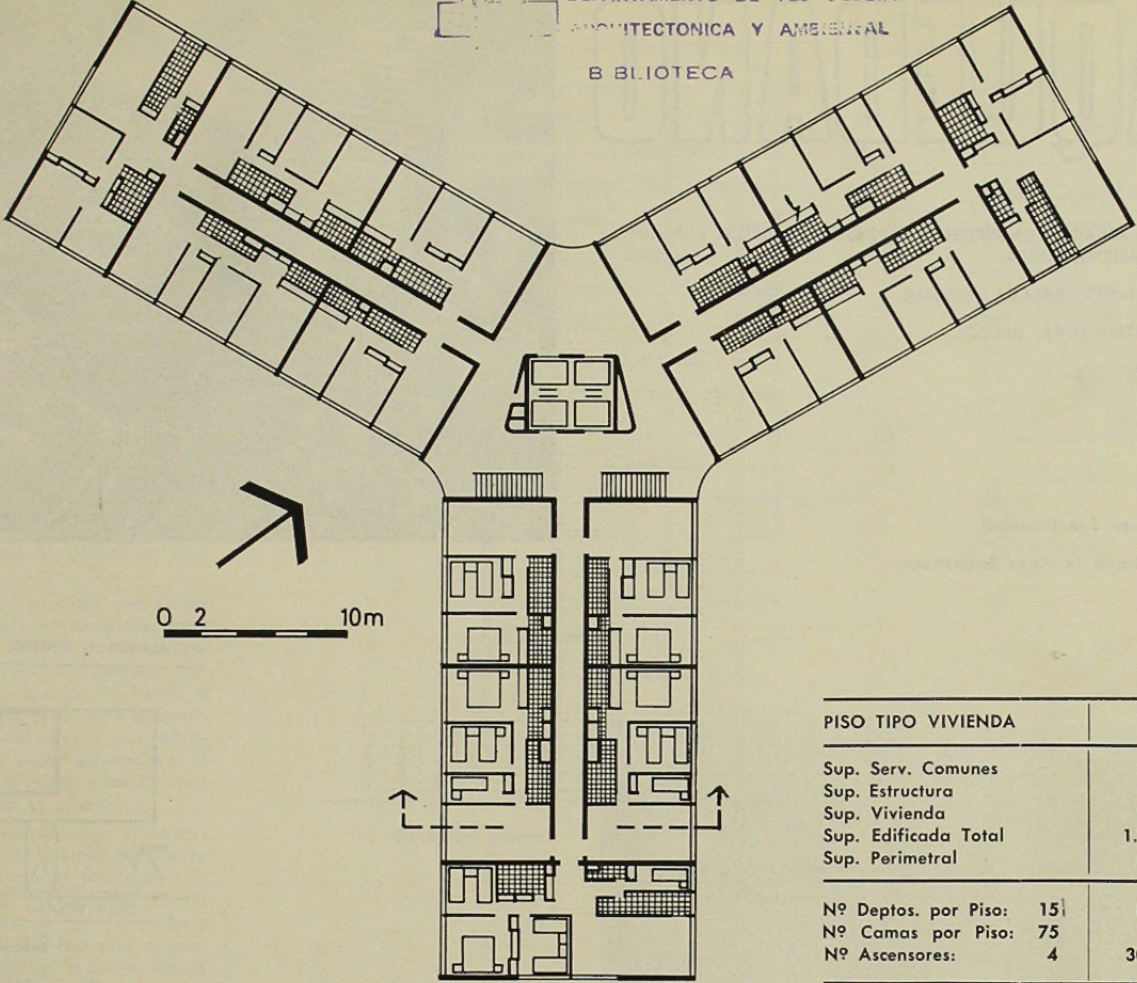
Corte elevación



DEPARTAMENTO DE TECNOLOGIA

ARQUITECTONICA Y AMBIENTAL

B BLIOTECA



PISO TIPO VIVIENDA	m ²	%
Sup. Serv. Comunes	213,54	17,3
Sup. Estructura	84,78	6,9
Sup. Vivienda	935,22	75,9
Sup. Edificada Total	1.233,54	100,0
Sup. Perimetral	540,54	43,7

Nº Deptos. por Piso:	15	82,24 m ² /Depto.
Nº Camas por Piso:	75	16,48 m ² /Cama
Nº Ascensores:	4	308,39 m ² /Asc.

